



SPIRITUAL

- Encourage a focus of various spiritual disciplines (i.e. prayer, worship, serving, stewardship, evangelism) throughout the school year.
- Maintain a strong, biblically based program and curriculum and integrate biblical principles throughout the entire school program.
- Encourage Faith Christian School faculty to participate in the counseling training classes which will enhance interpersonal and counseling practices.

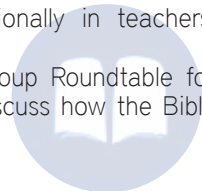
"This would be a great place for a great quote. Maybe from one of the videos, or the other parent testimonials on the website."

-Dawn Oliver, School Parent



- Execute Faith Christian School's effective partnership with Hope Christian School in Masaka, Uganda.
- Evaluate, strengthen, and coordinate an effective chapel program in the elementary and high school levels.
- Explore opportunities for students to use their talents in serving in various local churches, ministries, and agencies.

- Integrate biblical principles more intentionally in teachers' lesson plans.
- Consider establishing a 1-week Small Group Roundtable for High School students and teachers to discuss how the Bible relates to various topics.



- Instruct faculty, staff, students, and families on how Biblical principles (compassion, responsibility, hard work, encouragement, resolving conflict, etc.) apply to students in special needs situations.
- Provide opportunities in Bible Class, Chapel, etc. to develop the students' love of Jesus Christ and others.

- Evaluate our systematic Bible Curriculum that is consistent in grades 7 – 12.
- Evaluate, strengthen, and coordinate an effective chapel program in the elementary and high school levels.

www.faithlafayette.org/school

WORD, AND THE WORD WAS WITH
WORD WAS GOD. HE WAS IN THE
GOD. ALL THINGS WERE MADE
AND WITHOUT HIM WAS NOT ANY
AT WAS MADE. IN HIM WAS LIFE,
AS THE LIGHT OF MEN. THE LIGHT
DARKNESS, AND THE DARKNESS
ME IT.

HOLY
HOLY

FROM HIS TEMPLE
HE HEARD MY VOICE
WE WILL GIVE THANKS TO YOU FOREVER; FROM
GENERATION W

LET THE ONE WHO DESIRES TAKE THE WATER OF LIFE W

PRAISE

OH
SING
TO THE
LORD
NOW IS THE DAY OF
SALVATION
WHOEVER HEARS MY WORD
& BELIEVES HIM WHO SENT ME
HAS ETERNAL LIFE
BLESING
and GLORY
AND WISDOM
AND THANKSGIVING
& HONOR & POWER & MIGHT
BE TO OUR GOD FOR-
EVER & EVER! AMEN.
A NEW SONG
MAJESTIC IN
HOLINESS
AWESOME IN
GLORIOUS
DEEDS
LIVING
GOD

faith
CHRISTIAN SCHO

www.faithlafayette.org/school



5 YEAR STRATEGIC PLAN

OUR MISSION

Partnering with parents to help train and equip students to live effectively in God's world.

OUR VISION

As a ministry of Faith Baptist Church, Faith Christian School is dedicated to assisting Christian parents in fulfilling their God-given responsibility of training their children. FCS desires to provide a godly atmosphere that equips students to grow both academically and spiritually in order to serve God effectively in their home, church, and community.

OUR VALUES

Realizing that God has given the authority to the Christian home to train up successful young people, we at FCS endeavor to assist parents in the training process. We endeavor to present each subject area in the light of the principles within the Word of God. We must stress a Biblical worldview in the vital areas of life, sin, spiritual growth, self discipline, and communication. We desire to train each student to accept individual responsibility before God for his actions and to challenge him to glorify God in every facet of his life.

We desire to minister to the needs of the whole child and to promote his spiritual and moral growth, academic and intellectual progress, and physical and social development. Academically, we desire to have a high bar that stretches every student and a safety net for students who are trying their best. Spiritually, we desire to reach the heart, not just have good behavior. We want students to please God whether or not authority is present. Socially, we want students to focus on others rather than themselves. God has designed us to be "givers" not "takers" in order to be truly satisfied.

This brochure is the culmination of one year of praying, visioning, planning, and discussions with individuals committed to the long-term mission of Faith Christian School. In the summer of 2007 a survey was sent to all parents of Faith Christian School as part of the school's accreditation process. The information was collected and evaluated by the school staff, administration, and school committee. After a number of revisions, the draft was approved and adopted by the school committee on August 5, 2013. This brochure is a slightly abridged summary of the 2014-2018 plan. The plan highlights 5 core values:

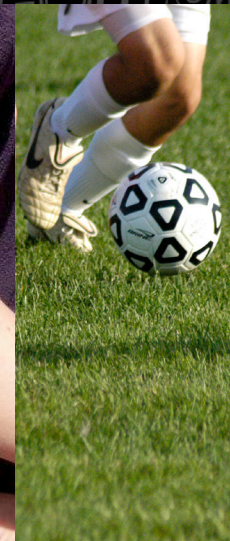
- Spiritual
- Academic
- Extra-Curricular
- Relationships
- Stewardship

With God's guidance, we look forward to implementing this plan in the coming months and years.

In Christ,
Your FCS School Committee



www.faithlafayette.org/school



Planning for Excellence

FAITH CHRISTIAN SCHOOL
5 YEAR STRATEGIC PLAN
2014-2018

faith
CHRISTIAN SCHOOL



ACADEMIC

- Establish the Minds In Motion program.
- Establish a Homework Resource Room in the High School and effectively communicate and strengthen the Help Class program.
- Identify and implement a LMS (Learning Management System).
- Review current FCS curriculum to identify opportunities to improve student technology skills to better prepare them for college.
- Maintain accreditation through ACSI and IDOE.
- Define the scope and objectives of the special needs program.
- Identify, apply, and refine school-wide, instructional and classroom management strategies to benefit special needs students.

"I am so very proud to say I'm an alumni of FCS! Faith has amazing administration, teachers, and coaches that strive to meet the academic, athletic, artistic, and most importantly, spiritual needs of each and every student."
-Ashley Mikeal Yount, Alumni



- Strengthen and support the high school guidance department.
- Enhance a systematic process for tracking the individual student's progress.
- Continue to develop curriculum to address students' critical thinking skills.
- Implement and strengthen ongoing professional development to enhance teacher technology aptitude and proficiency in the use of technology in the classroom.
- Expand the transition toward electronic curriculum and instruction.
- Define the job descriptions of the various special needs staff positions.
- Consider various classes, disciplines, and opportunities in the Fine Arts department.

- Evaluate and improve the J Term program in the jr. and sr. high.
- Evaluate STEM curriculum.
- Expand the special needs program.
- Consider requiring various forms of technology in selected classes.
- Evaluate the need to add advanced classes in elementary program.
- Consider adding another full-time or part-time, dedicated special needs position.

- Establish consistency and priority between our elective classes and core classes.
- Consider expanding the life skills class for high school.
- Evaluate the process of tracking student's individual progress.

- Expand/Broaden/Diversify our foreign language program – through clubs or formal classes.
- Perform audits of academic program.
- Evaluate the effectiveness of the high school guidance and placement department.

www.faithlafayette.org/school



EXTRA-CURRICULAR

- Strive for equity within the athletic program.
- Seek to establish various after school clubs in the elementary such as language, legos, robotics, etc.
- Investigate various vocational training options for students.



- Incorporate instruction focusing on wellness.
- Consider adding an Academic Team to compete against other schools.
- Provide advanced technology experiences through the formation of curricular or extracurricular activities.

- Enhance the after-care program with age-appropriate activities and opportunities for elementary students.
- Consider ways to strengthen and expand the school play.
- Consider building a track/field area for our track/field competitions.

In partnership with the National Inventors Hall of Fame, Faith Christian School is pleased to offer the nationally-acclaimed Camp Invention program to children entering grades one through six. It's an exciting, weeklong summer adventure in Science, Technology, Engineering and Math (STEM) that's all about big ideas.



Children will work together to seek innovative solutions to real-world problems and sharpen critical 21st century learning skills as they rotate through four modules that reinvent summer fun.

- Formalize the uniform purchasing and rotation program.
- Consider building a concession stand/press box for softball.
- Look into developing music (instrumental, voice) and drama summer camps for all our community youth at different levels or ages.

- Determine opportunities for the fine arts department to reach out into the Greater Lafayette community.
- Evaluate current athletic camps and consider offering additional sports or activities.

www.faithlafayette.org/school



RELATIONSHIPS

- Continue to educate students and staff regarding issues of interpersonal relationships, respect, honor, bullying, etc.
- Effectively partner with parents and students in the area of career planning.
- Establish a "Transition Day" for new FCS students along with all 7th and 9th grade students to effectively acclimate them into the school program.
- Develop and implement a Parent/Teacher Organization (PTO).
- Establish a jr/sr banquet parent committee to sponsor an after-banquet activity for students.
- Educate parents about the costs and challenges associated with advances in technology.



- Incorporate Quarterly Parent Information Meetings.
- Consider ways to effectively strengthen partnerships with local churches.
- Consider a building security program that uses parent volunteers.
- Continue to look for ways for FCS to invest in the Lafayette community through community service days and other community partnerships.
- Establish a parent mentoring group to connect new parents and veteran parents to the FCS family.
- Publish a quarterly newsletter to update folks on the happenings at Faith Christian School.

- Continue to refine and improve the high school society program.
- Consider ways to effectively connect with alumni.
- Provide ongoing parent training in regards to the proper use of and dangers associated with technology.
- Develop additional ways to integrate homeschool, private school, and public school youth into the children's and student ministries.
- Consider helping tutor students studying for the GED.

- Evaluate the drop-off/pick-up procedures.
- Improve the volunteer recruitment and deployment process.

- Identify potential elementary family activities to the calendar each year (skating night, movie night, game night, mother/son or father/daughter banquet, etc.).
- Offer tutoring opportunities to neighborhood youth.

www.faithlafayette.org/school



STEWARDSHIP

- Investigate developing an educational expansion to the K5 – 12 grade space to ensure continued Faith Christian School excellence.
- Evaluate the Eagle Fit and other fundraising elements of the school program.
- Consider expanding the community Eagle Run event to include biking, a 10km race, and a triathlon.
- Finalize implementation of School Safety Policy/Plan.
- Review and enhance the evaluation procedures of all school staff.



- Identify and enhance mutually beneficial programs like SCRIP to expand different funding opportunities that benefit FCS and families.
- Implement technological improvements in classrooms to include interactive whiteboards, projectors, and other instructional technology.
- Evaluate the investment into various resources that would enhance special needs students' performance. [i.e. computer software to assist instruction and remediation for special needs students, laptops for the special needs room, and study carrels for resource room]
- Evaluate the need and viability of providing bus transportation for families, various events, and trips.
- Re-evaluate building security and consider adding various additional security measures.

"Excellent, results driven academic standards, wonderfully diverse student body and top notch fine arts curriculum without the politics of a public education."

-Jason Linback, School Parent

- Consider adding a dedicated weight room and locker rooms/training area for student athletes.
- Evaluate our compensation and benefit plan for faculty and staff.

- Consider investigating additional community resources for special needs funding.
- Develop ways to involve area local churches in the area of financial support of FCS.
- Improve our training, support, and appreciation of coaches and directors.

- Consider expanding the available space for working with special needs students.

www.faithlafayette.org/school